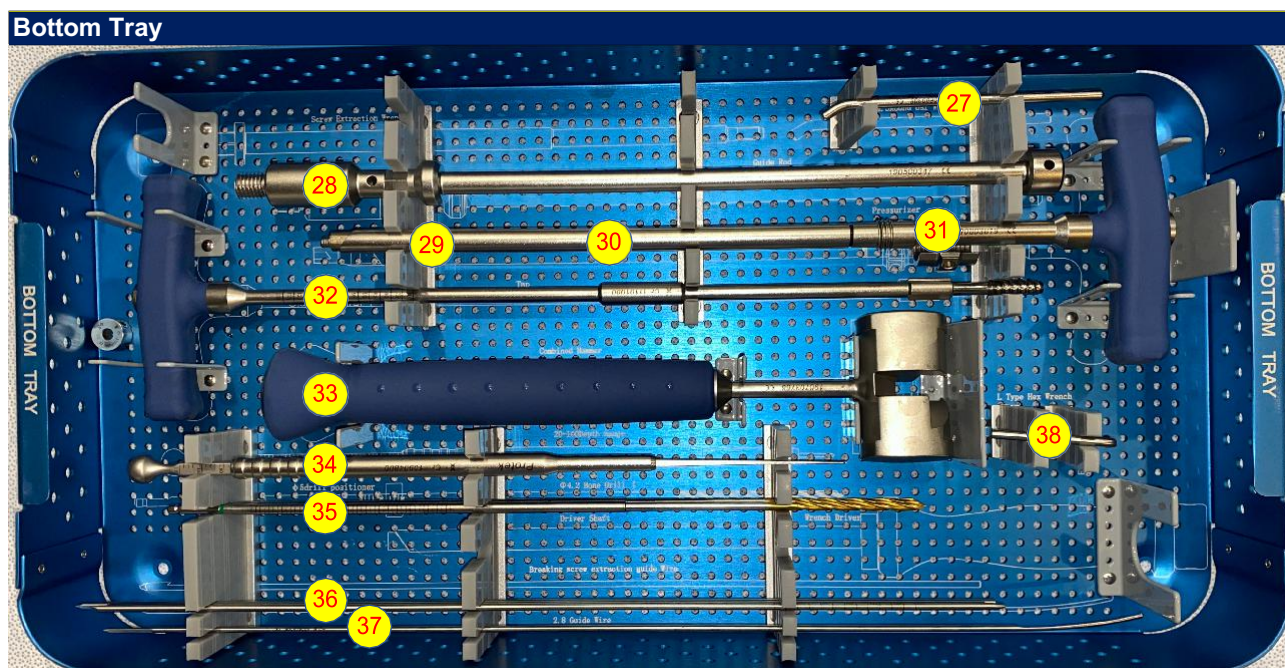


## Equinox G-Nail - SET B



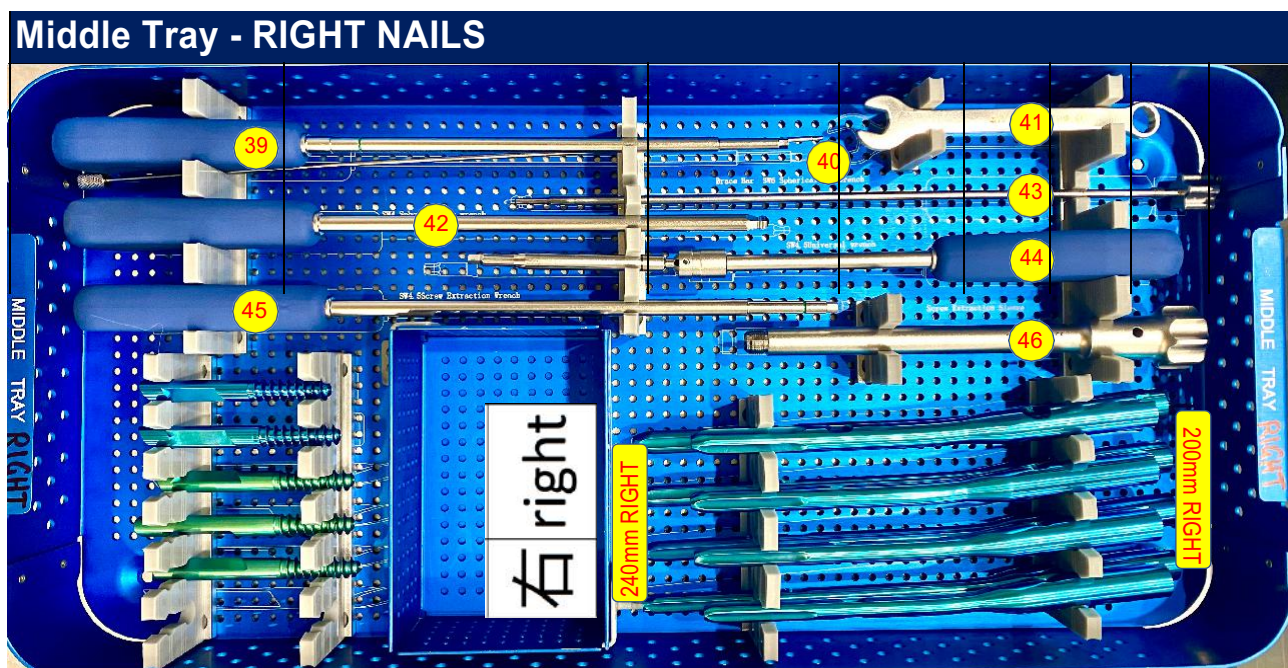
Surgery Date	
Surgeon	
Patient Id / Booking No	
Hospital	



Product Code (Theatre Usage Code)	Supplier Code	Number and Description	Standard Qty	Case Usage
4078	10603901	27. 4.5 Round bar wrench	1	
4176	10901900	28. Guide Rod for Combined Hammer	1	
4239	11101100	29. T-Handle Wrench for Lag Screw	1	
4257	11103800	30. Capture Screw for Lag Screw Wrench	1	
4241	11101300	31. Compression Nut(Pressurizer)	1	
4238	11101000	32. Tap	1	
4248	11102300	33. Combined Hammer	1	
4215	10904800	34. 20-100Depth Gauge	1	
4124	10803600	35. $\Phi$ 4.2 Bone Drill	2	
1206	11104300	36. 3.2mm Guide wire	2	
4246	11102000	37. Screw Extraction guide wire	1	
4476	31207200	38. L Type Hex Wrench	1	

## Equinox G-Nail - SET B

Surgery Date	
Surgeon	
Patient Id / Booking No	
Hospital	

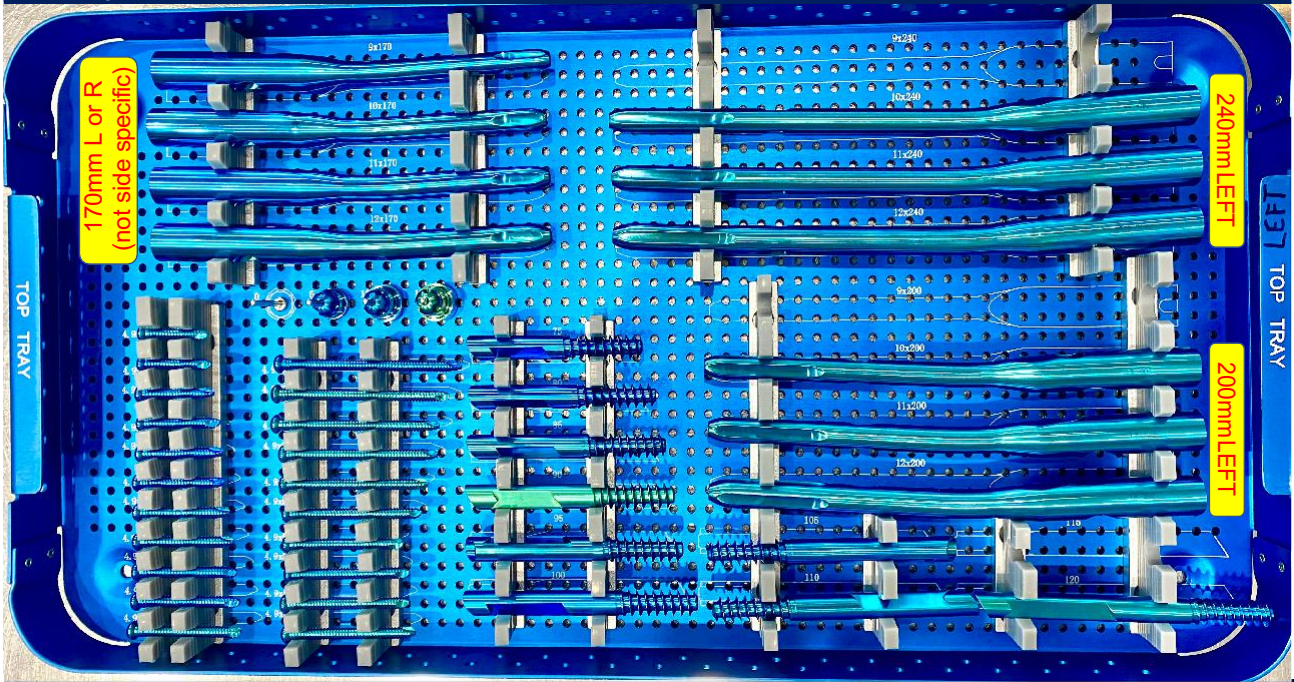


Product Code (Theatre Usage Code)	Supplier Code	Number and Description	Standard Qty	Case Usage
4251	11103100	39. SW4.0 Cannulated Hex Wrench	1	
4258	11104200	40. Capture Rod for Cannulated Hex Wrench	1	
4752	6901102	41. Hex Wrench	1	
4261	11104900	42. Brace Bar	1	
4260	11104800	43. SW6 Spherical hex wrench	1	
4259	11104700	44. SW4.5 Universal wrench	1	
4252	11103200	45. SW4.5Screw Extraction Wrench	1	
4244	11101800	46. Screw Extraction Sleeve	1	

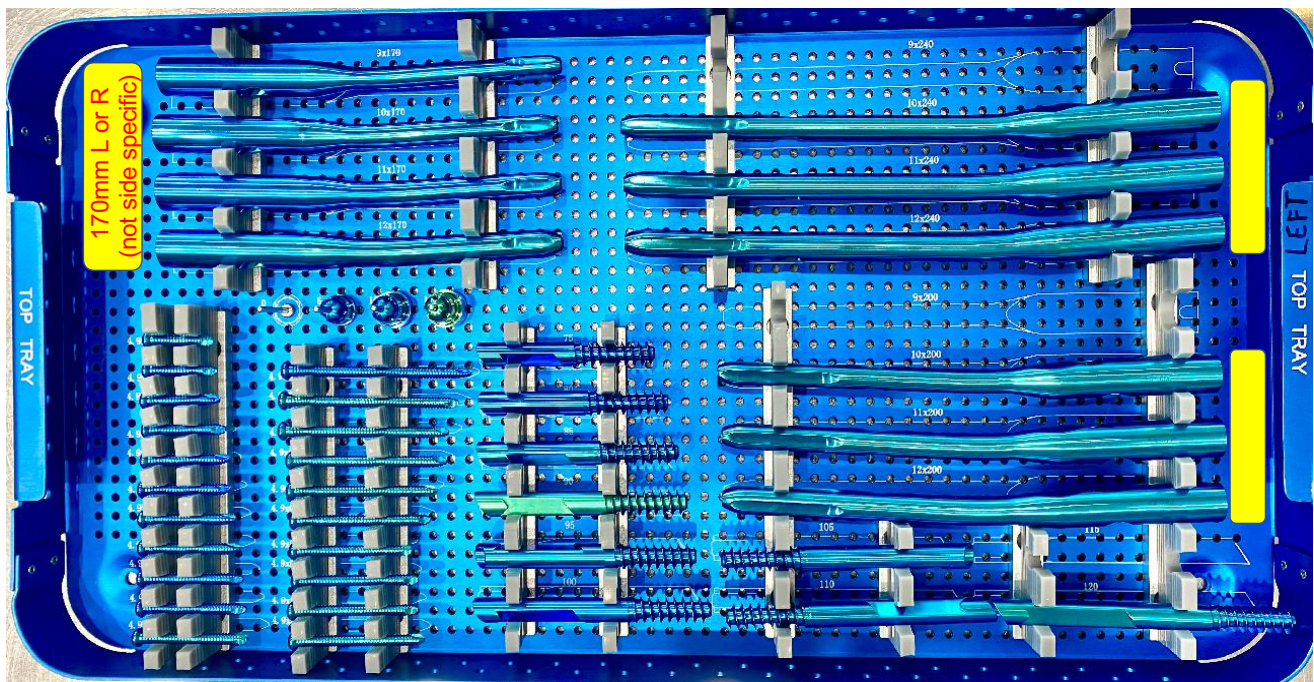
IMPLANTS				
1851	08.301.12.4609200	G Nail (Femoral) 9×200mm, Right TAV	1	
1845	08.301.12.4600200	G Nail (Femoral) 10×200mm, Right TAV	1	
1847	08.301.12.4601200	G Nail (Femoral) 11×200mm, Right TAV	1	
1849	08.301.12.4602200	G Nail (Femoral) 12×200mm, Right TAV	1	
1852	08.301.12.4609240	G Nail (Femoral) 9×240mm, Right TAV	1	
1846	08.301.12.4600240	G Nail (Femoral) 10×240mm, Right TAV	1	
1848	08.301.12.4601240	G Nail (Femoral) 11×240mm, Right TAV	1	
1850	08.301.12.4602240	G Nail (Femoral) 12×240mm, Right TAV	1	



## Top Tray - LEFT NAILS



Product Code (Theatre Usage Code)	Supplier Code	Number and Description	Standard Qty	Case Usage
1407	08.301.11.4609170	G Nail (Femoral) 9×170mm TAV	1	
1398	08.301.11.4600170	G Nail (Femoral) 10×170mm TAV	1	
1401	08.301.11.4601170	G Nail (Femoral) 11×170mm TAV	1	
1404	08.301.11.4602170	G Nail (Femoral) 12×170mm TAV	1	
1408	08.301.11.4609200	G Nail (Femoral) 9×200mm, Left TAV	1	
1399	08.301.11.4600200	G Nail (Femoral) 10×200mm, Left TAV	1	
1402	08.301.11.4601200	G Nail (Femoral) 11×200mm, Left TAV	1	
1405	08.301.11.4602200	G Nail (Femoral) 12×200mm, Left TAV	1	
1409	08.301.11.4609240	G Nail (Femoral) 9×240mm, Left TAV	1	
1400	08.301.11.4600240	G Nail (Femoral) 10×240mm, Left TAV	1	
1403	08.301.11.4601240	G Nail (Femoral) 11×240mm, Left TAV	1	
1406	08.301.11.4602240	G Nail (Femoral) 12×240mm, Left TAV	1	
1854	08.301.12.4651075	G Blade (Screw) 75mm TAV	1	
1855	08.301.12.4651080	G Blade (Screw) 80mm TAV	1	
1856	08.301.12.4651085	G Blade (Screw) 85mm TAV	1	
1857	08.301.12.4651090	G Blade (Screw) 90mm TAV	1	
1858	08.301.12.4651095	G Blade (Screw) 95mm TAV	1	
1859	08.301.12.4651100	G Blade (Screw) 100mm TAV	1	
1860	08.301.12.4651105	G Blade (Screw) 105mm TAV	1	
1861	08.301.12.4651110	G Blade (Screw) 110mm TAV	1	
1862	08.301.12.4651115	G Blade (Screw) 115mm TAV	1	
1863	08.301.12.4651120	G Blade (Screw) 120mm TAV	1	



Product Code (Theatre Usage Code)	Supplier Code	Number and Description	Standard Qty	Case Usage
1031	08.301.01.4630000	End cap (g-Nail) 0mm TAV	1	
1032	08.301.01.4631000	End cap (g-Nail) 5mm TAV	1	
1033	08.301.01.4632000	End cap (g-Nail) 10mm TAV	1	
1034	08.301.01.4633000	End cap (g-Nail) 15mm TAV	1	
1038	08.301.01.4644930	Locking Screw 4.9×30 TAV	1	
1039	08.301.01.4644932	Locking Screw 4.9×32 TAV	1	
1040	08.301.01.4644934	Locking Screw 4.9×34 TAV	1	
1041	08.301.01.4644936	Locking Screw 4.9×36 TAV	1	
1042	08.301.01.4644938	Locking Screw 4.9×38 TAV	1	
1043	08.301.01.4644940	Locking Screw 4.9×40 TAV	1	
1044	08.301.01.4644942	Locking Screw 4.9×42 TAV	1	
1045	08.301.01.4644944	Locking Screw 4.9×44 TAV	1	
1046	08.301.01.4644946	Locking Screw 4.9×46 TAV	1	
1047	08.301.01.4644948	Locking Screw 4.9×48 TAV	1	
1048	08.301.01.4644950	Locking Screw 4.9×50 TAV	1	
1049	08.301.01.4644952	Locking Screw 4.9×52 TAV	0	
1050	08.301.01.4644954	Locking Screw 4.9×54 TAV	0	
1051	08.301.01.4644956	Locking Screw 4.9×56 TAV	0	
1052	08.301.01.4644958	Locking Screw 4.9×58 TAV	0	
1053	08.301.01.4644960	Locking Screw 4.9×60 TAV	0	
1054	08.301.01.4644964	Locking Screw 4.9×64 TAV	0	
1055	08.301.01.4644968	Locking Screw 4.9×68 TAV	0	
1056	08.301.01.4644972	Locking Screw 4.9×72 TAV	0	
1057	08.301.01.4644976	Locking Screw 4.9×76 TAV	0	
1058	08.301.01.4644980	Locking Screw 4.9×80 TAV	0	