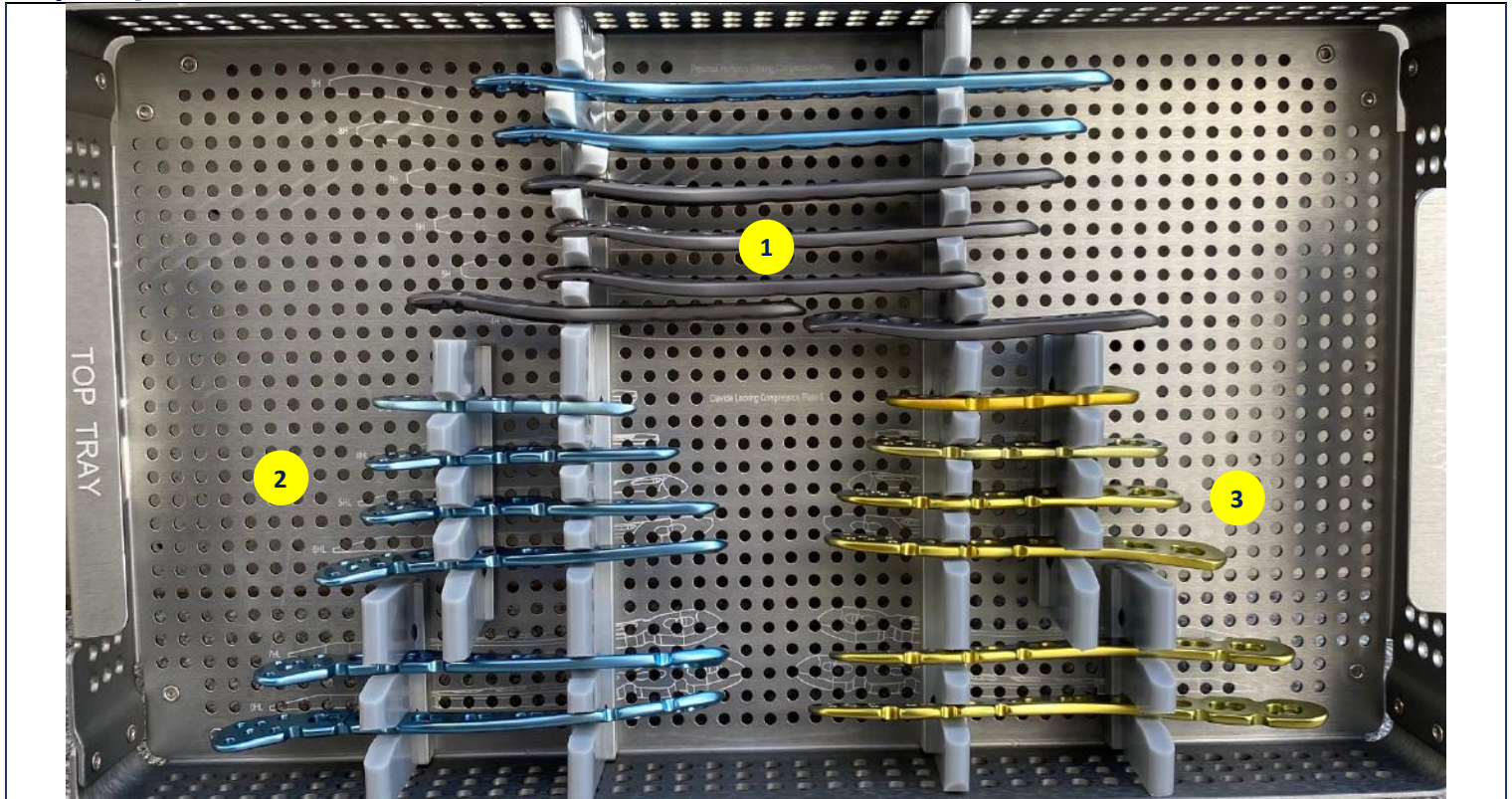


## MODULE 2. CLAVICLE AND PROXIMAL HUMERUS PLATES

### Top Tray - Proximal Humerus & Distal Clavicle Plates



Product code & Barcode (Theatre Usage Code)	Supplier Code	Number & Description	Dimensions	Standard Qty	Case Usage
2486  0106912547037477	08.311.01.100635803	Proximal Humerus LCP Ti	3 Holes	1	
2487  0106912547037484	08.311.01.100635804	Proximal Humerus LCP Ti	4 Holes	1	
2488  0106912547037491	08.311.01.100635805	Proximal Humerus LCP Ti	5 Holes	1	
2489  0106912547037507	08.311.01.100635806	Proximal Humerus LCP Ti	6 Holes	1	
2490  0106912547037514	08.311.01.100635807	Proximal Humerus LCP Ti	7 Holes	1	
2483  0106912547037378	08.311.01.100635708	Proximal Humerus LCP TAV	8 Holes	0	
2484  0106912547037385	08.311.01.100635709	Proximal Humerus LCP TAV	9 Holes	0	
1941  0106912547121251	08.311.01.100033703	Distal Clavicle LCP	3 Holes / Left	1	

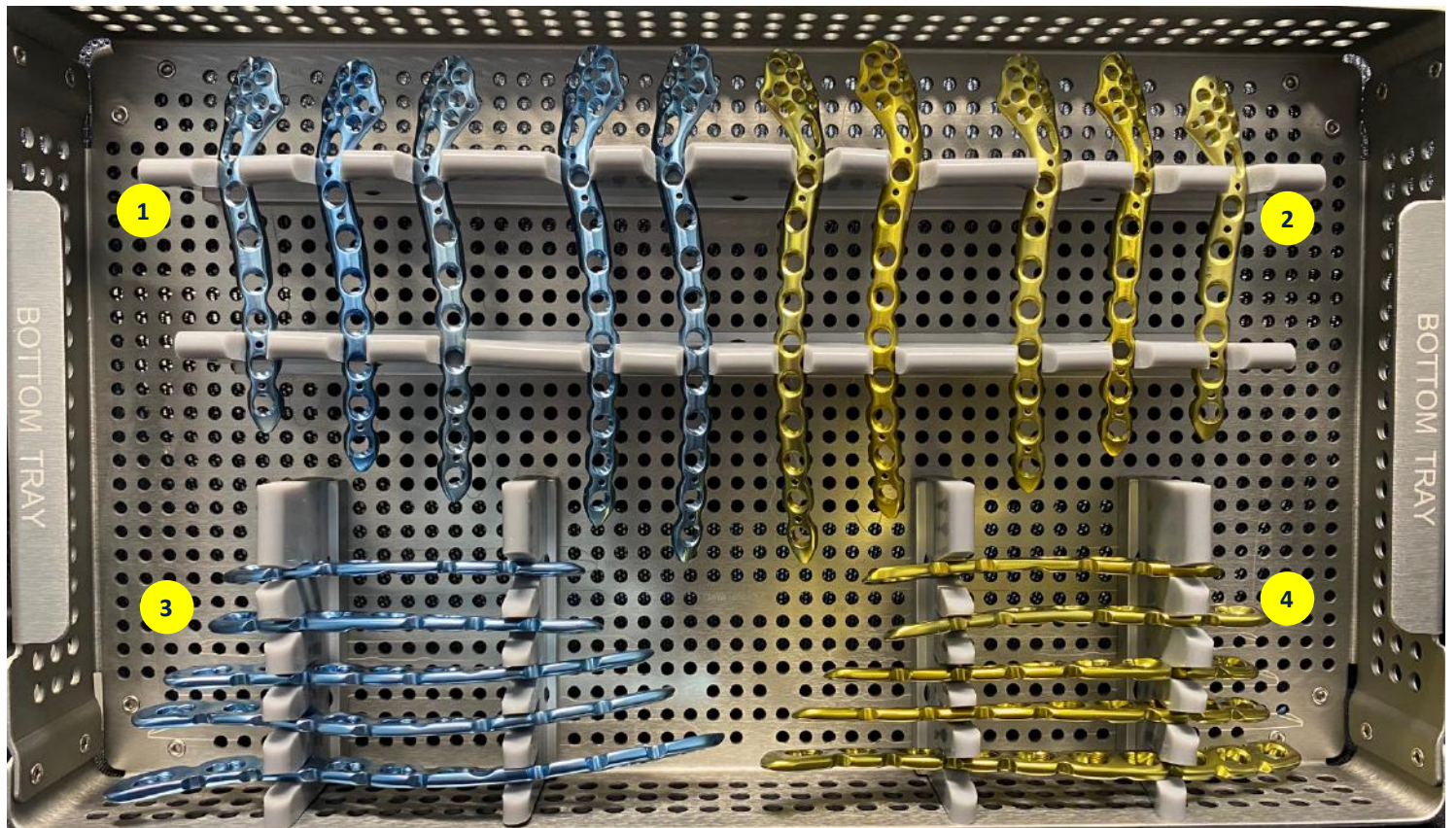
1942	 0106912547121268	08.311.01.100033704	Distal Clavicle LCP	4 Holes / Left	1	
1943	 0106912547121275	08.311.01.100033705	Distal Clavicle LCP	5 Holes / Left	1	
1944	 0106912547121282	08.311.01.100033706	Distal Clavicle LCP	6 Holes / Left	1	
1945	 0106912547121299	08.311.01.100033707	Distal Clavicle LCP	7 Holes / Left	1	
1946	 0106912547121305	08.311.01.100033708	Distal Clavicle LCP	8 Holes / Left	1	
1977	 0106912547121855	08.311.01.100044703	Distal Clavicle LCP	3 Holes / Right	1	
1978	 0106912547121862	08.311.01.100044704	Distal Clavicle LCP	4 Holes / Right	1	
1979	 0106912547121879	08.311.01.100044705	Distal Clavicle LCP	5 Holes / Right	1	
1980	 0106912547121886	08.311.01.100044706	Distal Clavicle LCP	6 Holes / Right	1	
1981	 0106912547121893	08.311.01.100044707	Distal Clavicle LCP	7 Holes / Right	1	
1982	 0106912547121909	08.311.01.100044708	Distal Clavicle LCP	8 Holes / Right	1	

2



## MODULE 2. CLAVICLE AND PROXIMAL HUMERUS PLATES

### Bottom Tray - Midshaft & Anterior-Superior Clavicle Plates



Product code & Barcode (Theatre Usage Code)	Supplier Code	Number & Description	Dimensions	Standard Qty	Case Usage
2935  0106912547333760	08.311.01.101010706	Anterior-Superior Clavicle Locking Plate	6 Holes / Left	1	
2936  0106912547333777	08.311.01.101010707	Anterior-Superior Clavicle Locking Plate	7 Holes / Left	1	
2937  0106912547333784	08.311.01.101010708	Anterior-Superior Clavicle Locking Plate <b>1</b>	8 Holes / Left	1	
2938  0106912547333791	08.311.01.101010709	Anterior-Superior Clavicle Locking Plate	9 Holes / Left	0	
2939  0106912547333807	08.311.01.101010710	Anterior-Superior Clavicle Locking Plate	10 Holes / Left	1	
2940  0106912547334361	08.311.01.101011706	Anterior-Superior Clavicle Locking Plate	6 Holes / Right	1	
2941  0106912547334378	08.311.01.101011707	Anterior-Superior Clavicle Locking Plate	7 Holes / Right	1	

2942	 0106912547334385	08.311.01.101011708	Anterior-Superior Clavicle Locking Plate	8 Holes / Right	1	
2943	 0106912547334392	08.311.01.101011709	Anterior-Superior Clavicle Locking Plate <b>2</b>	9 Holes / Right	0	
2944	 0106912547334408	08.311.01.101011710	Anterior-Superior Clavicle Locking Plate	10 Holes / Right	1	
1953	 0106912547153504	08.311.01.100034706	Midshaft Clavicle LCP	6 Holes / Left	1	
1954	 0106912547153511	08.311.01.100034707	Midshaft Clavicle LCP	7 Holes / Left	1	
1955	 0106912547153528	08.311.01.100034708	Midshaft Clavicle LCP <b>3</b>	8 Holes / Left	1	
1956	 0106912547153535	08.311.01.100034709	Midshaft Clavicle LCP	9 Holes / Left	1	
1957	 0106912547153542	08.311.01.100034710	Midshaft Clavicle LCP	10 Holes / Left	1	
1989	 0106912547154105	08.311.01.100045706	Midshaft Clavicle LCP	6 Holes / Right	1	
1990	 0106912547154112	08.311.01.100045707	Midshaft Clavicle LCP	7 Holes / Right	1	
1991	 0106912547154129	08.311.01.100045708	Midshaft Clavicle LCP <b>4</b>	8 Holes / Right	1	
1992	 0106912547154136	08.311.01.100045709	Midshaft Clavicle LCP	9 Holes / Right	1	
1993	 0106912547154143	08.311.01.100045710	Midshaft Clavicle LCP	10 Holes / Right	1	